



# Uppbygging hagrannsóknaumhverfis á Íslandi, nýjar stofnanir?

Þórólfur Matthíasson





# Yfirlit

- Pælingar Fjármálaráðs
- Er hægt að nota hagsmunaaðila?
- Stofnanauppbygging annars staðar (yfirborðslegt)
- Hvað vantar?
- Hvernig bæta úr?



## Tafla 2. Spár Hagstofu Íslands og Seðlabanka Íslands um hagvöxt

Dagsetning útgáfu	2015	2016	2017	2018	2019	2020	2021	2022
<i>Hagstofa Íslands</i>								
nóv. '16	4,22	4,8	4,4	3,0	2,9	2,7	2,6	
maí '16	4,00	4,3	3,5	2,9	2,8	2,7	2,7	
feb. '16	4,22	4,0	3,1	2,9	2,8	2,7	2,7	
nóv. '15	4,33	3,5	2,8	2,6	2,5			
jún. '15	3,8	3,0	2,8	2,6	2,5			
apr. '15	3,8	3,2	2,8	2,7	2,5			
mar. '15	3,9	3,1	2,8	2,7	2,5			
nóv. '14	3,3	2,9	2,5	2,6				
júl. '14	3,4	2,9	2,8	2,9				
<i>Seðlabanki Íslands</i>								
nóv. '16		5,0	4,5	2,9	2,7			
nóv. '15		3,2	2,9	2,6				
nóv. '14		2,8	2,3					

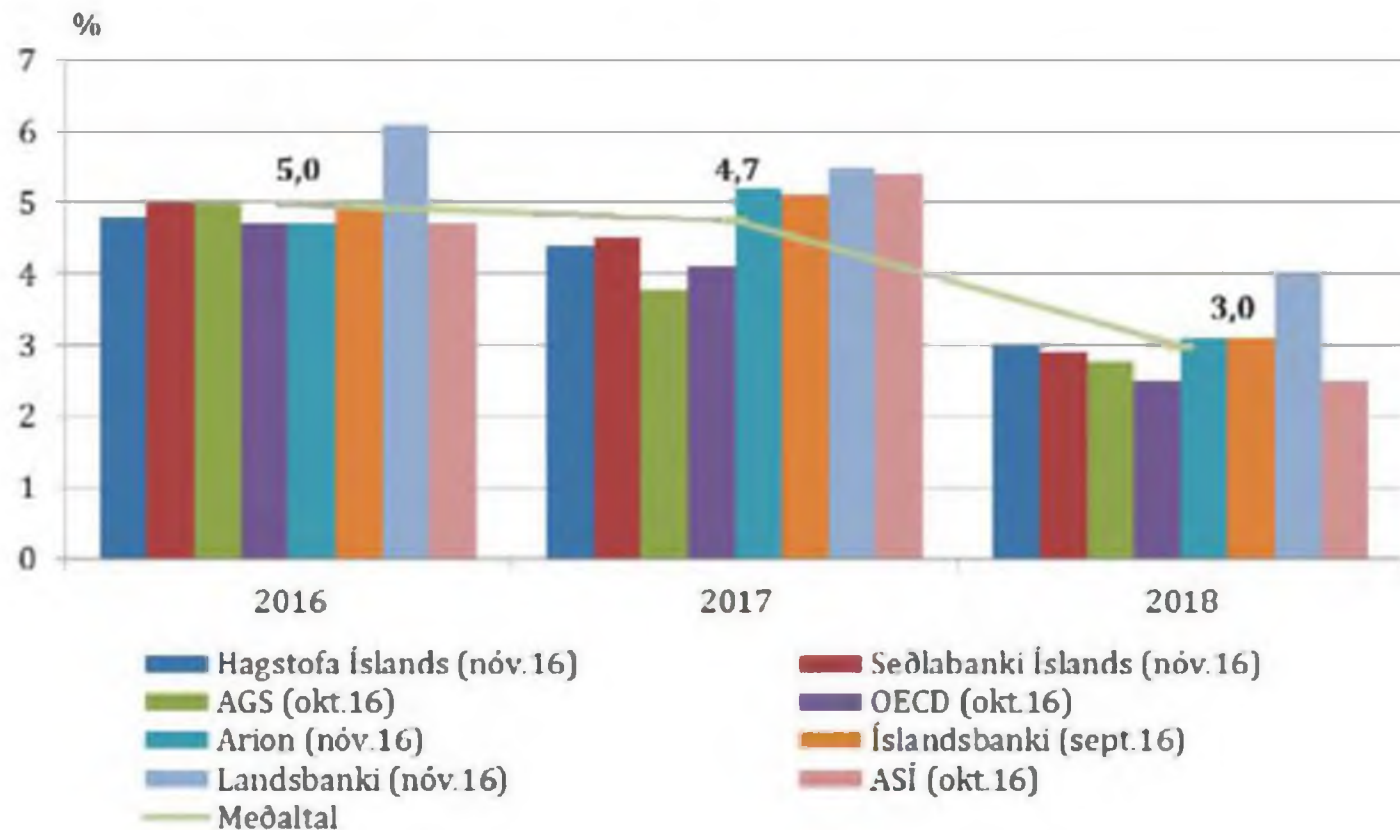
Næstum sama spá á sama tíma, samskonar hneigð til vanmats og uppfærslu mats eftir því sem tíminn milli spár og spátímabils stýttist

Heimildir: Hagstofa Íslands og Seðlabanki Íslands.



# Breiddin er meiri sé litið til fleiri greiningaraðila

Mynd 1. Spár greiningaraðila um hagvöxt 2016-2018





# Geta opinberir aðilar þá ekki bara notað spár banka, ASÍ/SA?

- Þessir aðilar hafa augljósa hagsmuni af að stjórnvöld séu bjartsýn varðandi hagvöxt (ASÍ, bankar) eða svartsýn (SA) á ákveðnum tímum og við ákveðnar aðstæður
- Spár þeirra yrðu vart teknar trúanlega jafnvel þó svo þær yrðu heiðarlega unnar
- Bara opinber/óháður aðili hefur nægan trúverðugleika





# Svípjóð, Konjunkturinstituttet



PUBLICATIONS

DATA SETS

[STARTSIDA](#) / [ENGLISH](#) / [ABOUT NIER](#)

## About NIER

The National Institute of Economic Research (NIER) is a government agency operating under the Ministry of Finance and performs analyses and forecasts of the Swedish and international economy and conducts related research.

Our forecasts are used as a basis for economic policy in Sweden. We also analyze economic developments in Sweden and internationally, and perform research in economics.

Our forecasts are not only an independent basis for economic policy, but are also used by other government agencies, companies and organizations. As with other agencies, we have an independent status. Our analysis and our research is therefore conducted without political considerations.

The Institute was founded in 1937 and has about 55 employees. It is headed by Director-General Urban Hansson Brusewitz.

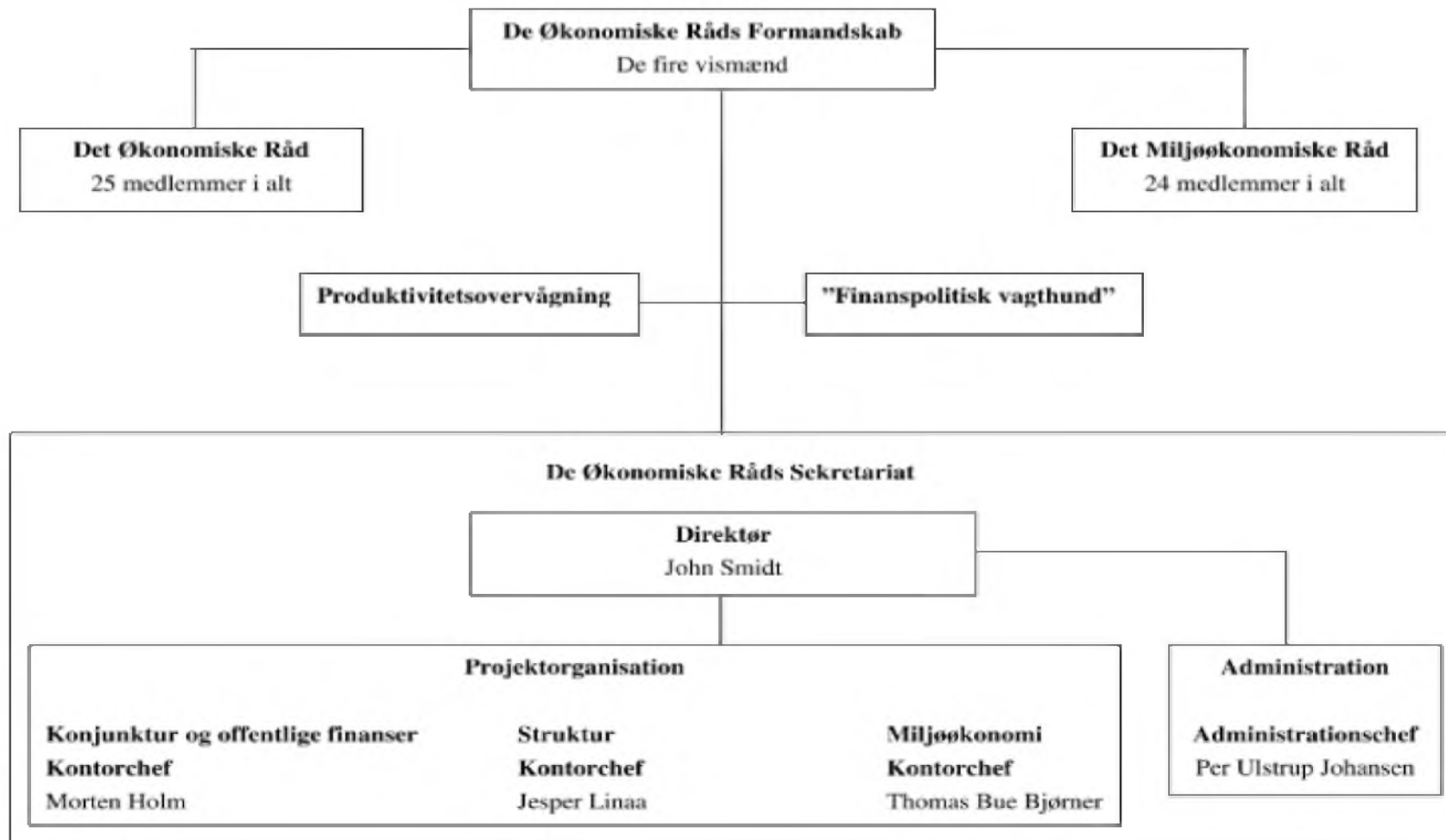
### Sharing Knowledge

In connection with our forecasts, we invite partners and analysts from banks, government agencies and other organizations to analyst meetings. Our clients are mainly government offices, other government agencies and NGOs. An assignment may be in the form of an investigation or a model simulation to describe the effects of policy change.

We also offer lectures on the theme of economic and macroeconomics. With our expertise, we can also take on different investigations in the macro and environmental economics.



# Danmörk, det ökonomiske råd (vismænd)





# Noregur, Statistisk Sentralbyrå

- Rekur og viðhaldur þjóðhagslíkönnum
- Rekur umfangsmikla rannsóknardeild
- Er óháð ríkisstjórn







# Finland, ETLA

- Sjálfstæð stofnun
- Fjármögnuð af ríki og samtökum atvinnurekenda og launþega og af eigin aflafé (styrkjum)





# Evrópskar hagrannsóknastofnanir

**AIECE**

*Association of European Conjunction Institutes*

Home

About AIECE

Members and observers

Publications

Activities

Search

Useful links

Contact information

## Institutes

### Austria

Vienna - [WIFO](#) Österreichisches Institut für Wirtschaftsforschung

### Belgium

Brussels - [FPB](#) Federal Planning Bureau

Louvain-la-Neuve - [IRES](#) Institut de Recherches économiques et sociales

### Denmark

Copenhagen - [DEC](#) Danish Economic Council

### Finland

Helsinki - [ETLA](#) The Research Institute of the Finnish Economy

### France

Issy-les-Moulineaux - [BIPE](#) Bureau d'Information et de Prévisions Economiques

Paris - [INSEE](#) Institut National de la Statistique et des Etudes Economiques

Paris - [OFCE](#) Observatoire Français des Conjonctures Economiques

Paris - [COE-REXECODE](#) Centre d'observation économique et de de Recherches pour l'Expansion de l'Economie et le Développement des Entreprises



### **Greece**

Athens - KEPE Center of Planning and Economic Research

### **Hungary**

Budapest - GKI Co Economic Research Company

Budapest - KOPINT-TARKI Institute for Economic Research

### **Ireland**

Dublin - ESRI Economic and Social Research Institute

### **Italy**

Bologne - AP Association Prometeia

Milan - REF Ricerche

Rome - ISTAT Istituto nazionale di statistica

Rome - CSC Centro Studi CONFINDUSTRIA

### **Netherlands**

The Hague - CPB Netherlands Bureau for Economic Policy Analysis

### **Norway**

Oslo - SN Statistics Norway

### **Poland**

Warsaw - IBRKK Institute for Market, Consumption and Business Cycles Research

### **Slovenia**

Ljubljana - Analytics at CCIS Economic Outlook, Analyses and Forecasts





### **Spain**

Madrid - DGPC Direccion General de Politica Economica

Madrid - CEPREDE Centro de Prediccion Economica, Universidad Autonoma de Madrid

### **Sweden**

Stockholm - CSE Confederation of Swedish Enterprise

Stockholm - NIER National Institute of Economic Research

### **Switzerland**

Zurich - KOF-ETHZ Swiss Economic Institute

### **United Kingdom**

London - NIESR The National Institute of Economic and Social Research

### **Observers**

#### **Belgium**

Brussels - CCE Direction Générale des Affaires Economiques et Financières

#### **France**

Paris - IMF International Monetary Fund - Office in Europe

#### **Germany**

Frankfurt-am-Main - ECB Euro Area Macroeconomic Developments Division

Köln - IWKoeln Institut der deutschen Wirtschaft Köln

#### **Luxemburg**

Luxemburg - Eurostat

#### **Slovak Republic**

Bratislava - Savba Slovak Academy of Sciences - Institute of Economic Research

#### **Switzerland**

Geneva - WTO World Trade Organization, Economic Research and Analysis Division





# Hvað vantar?

- Fjármálaráð þarf sekretariat
- Það er nauðsynlegt að fjölga þeim þjóðhagslíkönum sem notast er við, sérstaklega m.t.t. opinberu fjármálanna og áhrifa þeirra á efnahagsþróunina.
- Það þarf að styrkja greiningargetu opinberra aðila gagnvart afleiðingum einstakra atburða og aðgerða á efnahagssviðinu





# Hvernig bæta úr?

- Styrkja Hagstofu og efnahags- og fjármálaráðuneytið (Norska líkanið)
- Þjóðhagsstofnun á vegum efnahags- og fjármálaráðuneytis (gamla Þjóðhagsstofnunarlíkanið)
- Þjóðhagsstofnun á vegum Alþingis (frumvarpið)
- Sjálfstæð akademísk stofnun kostuð af atvinnulífi og stjórnvöldum (Finnska líkanið)

